



SQUAN I, LLC - Ron Cieri Jim Ingram - Farm Manager

WAP Participants since 2011

BMP Highlights:

- Covered HUAP for brood cows
- 6+ miles of exclusion fence

Protecting ~3 miles of watercourses and
40 acres of wetlands and ponds

- 2 miles of rotational grazing fence
- 3 watering systems w/~3 miles of pipeline, numerous watering facilities stream crossings
- ~600ac prescribed grazing mgmt.
- New covered HUAP/Manure Storage being designed for weaned calves and feeders

Acres Owned/Leased: 992/220

Another 740ac on neighboring farm outside the watershed

Animals: 115 cow/calf pairs,
100 feeders, 7 bulls

Planner: Dan Vredenburg
NM Planner: Nate Nero
PFM Planner: Paul Cerosaletti





NATIONAL ACADEMY OF SCIENCES

Watershed Agricultural Tour 2019

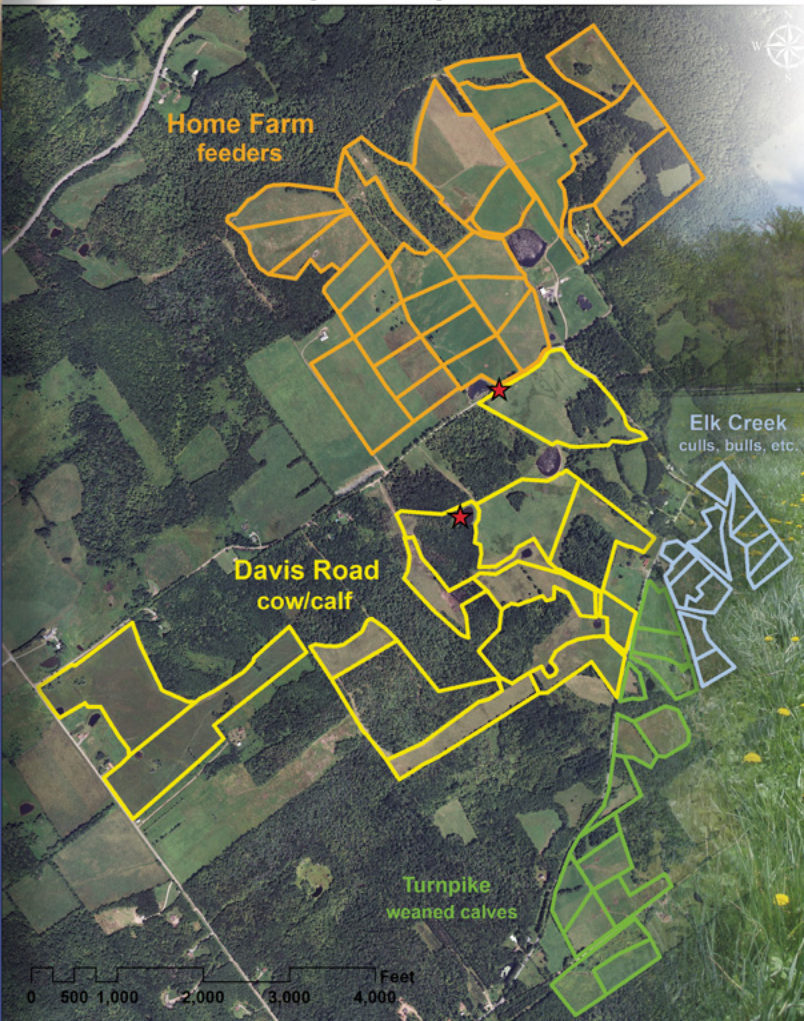


SQUAN I, LLC



Grazing Management Areas

SQUAN I, LLC - Ron Cieri
Jim Ingram - Farm Manager
Grazing Management



NATIONAL ACADEMY OF SCIENCES
Watershed Agricultural Tour 2019

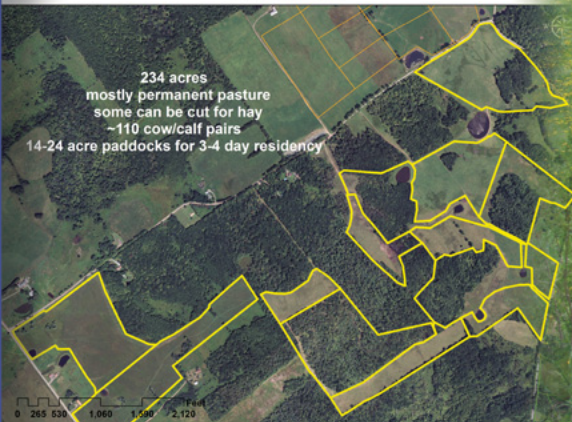




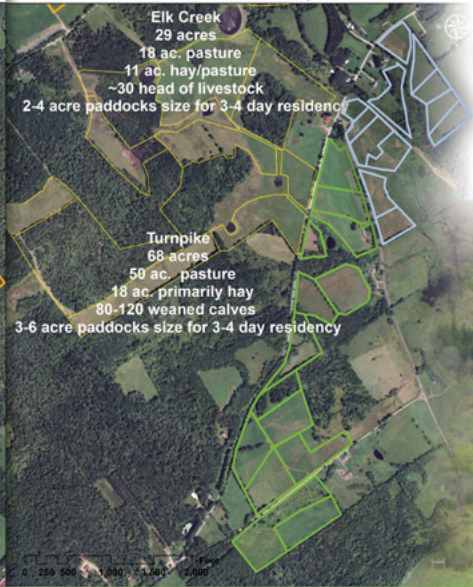
Home Farm



Davis Road



Elk Creek & Turnpike



SQUAN I, LLC - Ron Cieri
 Jim Ingram - Farm Manager
 Grazing Management



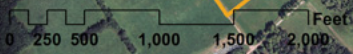


Home Farm

268 acres
155 ac. pasture
32 ac. hay/pasture
81 ac. hay
80-120 feeder cattle (600-800#)
4-8.5 ac.paddocks for 3-4 day residency



SQUAN I, LLC - Ron Cieri
Jim Ingram - Farm Manager
Grazing Management



NATIONAL ACADEMY OF SCIENCES
Watershed Agricultural Tour 2019



Elk Creek & Turnpike

Elk Creek
29 acres

18 ac. pasture
11 ac. hay/pasture
~30 head of livestock

2-4 acre paddocks size for 3-4 day residency

Turnpike
68 acres

50 ac. pasture
18 ac. primarily hay
80-120 weaned calves

3-6 acre paddocks size for 3-4 day residency

SQUAN I, LLC - Ron Cieri
Jim Ingram - Farm Manager
Grazing Management

0 250 500 1,000 1,500 2,000 Feet



Davis Road

SQUAN I, LLC - Ron Cieri
Jim Ingram - Farm Manager
Grazing Management

234 acres
mostly permanent pasture
some can be cut for hay
~110 cow/calf pairs
14-24 acre paddocks for 3-4 day residency

0 265 530 1,060 1,590 2,120 Feet

